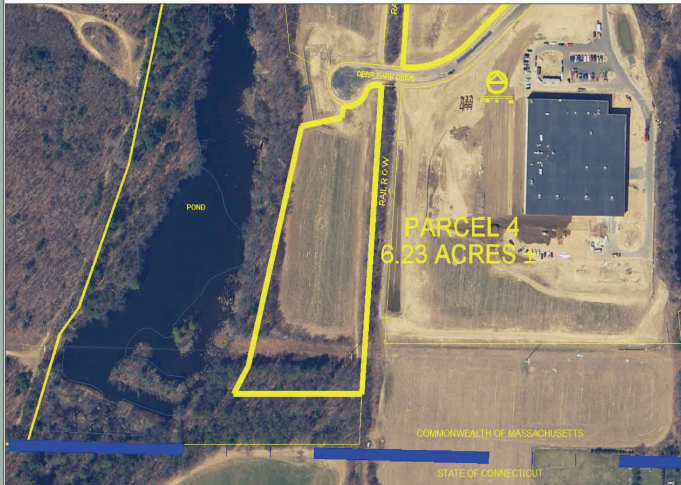


Deer Park Industrial Center

Parcel 4 East Longmeadow, MA

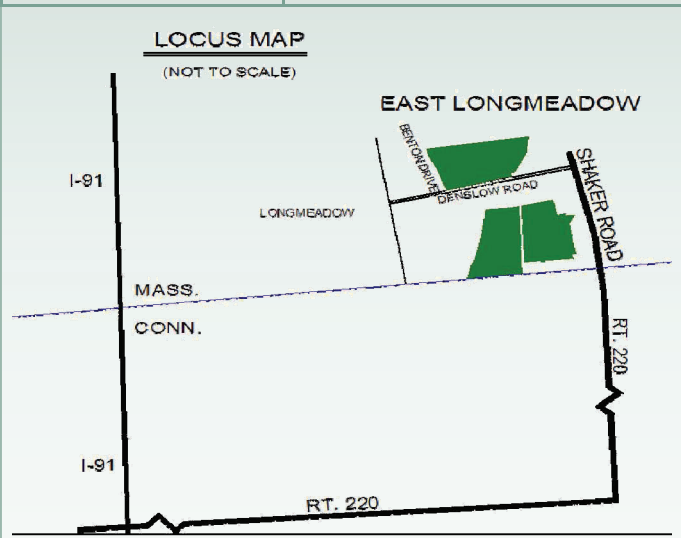


Park Description: The Deer Park Industrial Center is located on the Massachusetts-Connecticut border. The Park has enjoyed rapid market acceptance with Suddekor LLC, Josev Products, Inc., and Toner Plastics purchasing properties. With only two (2) parcels remaining, the Park represents an opportunity to grow and expand your business in the very successful business friendly industrial park environment.

Community Description: East Longmeadow, MA and Westmass have shared a long and successful history of industrial park and economic development. The Community welcomed Milton Bradley (Hasbro) by creating its first Park more than three decades ago. Today, more than 30 companies populate both the East Longmeadow Industrial Park and the Deer Park Industrial Center.

The Westmass Commitment: Westmass will assist companies with site evaluation, conceptual site planning, project permitting and closing requirements. Westmass has extensive experience in permitting of business/industrial projects in East Longmeadow. Our professional staff will manage and coordinate your project's permitting to assure your company of a successful and expedited effort.

Parcel Size & Frontage:	6.23 acres with 151' of frontage on Deer Park Drive
Developable Area:	6.23 acres
Services:	Fully served; All utilities available
Zoning:	Industrial Garden; seeking manufacturing and light industrial uses.
Permitting Status	Required Site Plan Review by the East Longmeadow Planning Board.



Westmass

Westmass Area Development Corporation

255 Padgette Street, Chicopee, MA 01022

(413) 593-6421

www.westmassdevelopment.com

Information and pricing are subject to change without notice

Affiliated with the Economic Development Council of Western Massachusetts