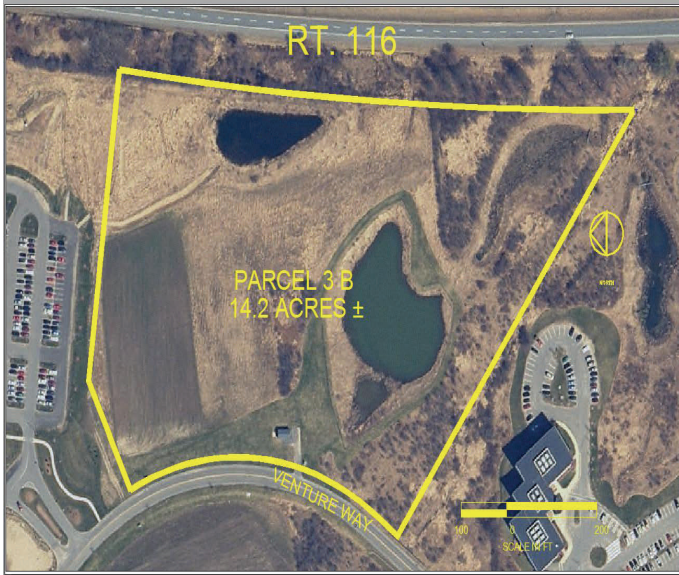


Hadley University Business Park

Parcel 3 B Hadley, MA

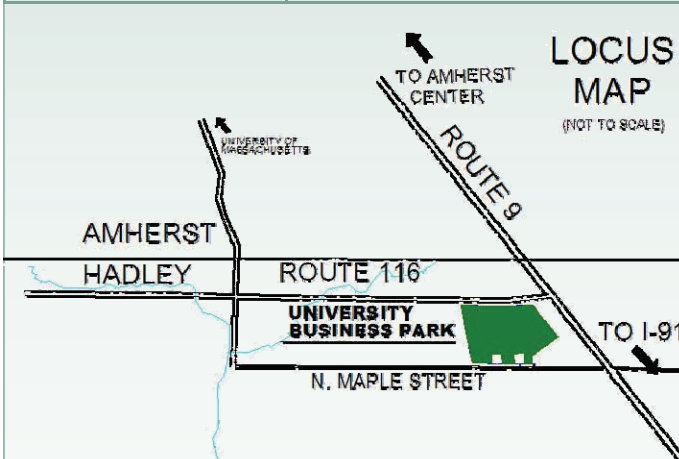


Park Description: The Hadley University Business Park totals 78 acres and is located in the shadow of the University of Massachusetts at Amherst and the five college area. The Park is home to National Evaluation Systems, Inc. office headquarters (137,00 SF.), one of the area's largest private employers. There is also a two story 55,000 square foot multi-tenant office building in the Park. Westmass' Development Restrictions augment local zoning to insure quality development.

Community Description: The Town of Hadley has combined its agricultural heritage with a well thought out approach to development which is intended to maintain a small town environment with low property tax rates surrounded by the amenities only found in large urban areas. UMASS and the other area colleges offer access to a young educated workforce, provide opportunities for continuing education and exposure to the arts and college sports.

The Westmass Commitment: Westmass will assist companies with site evaluation, conceptual site planning, project permitting and closing requirements. Westmass has extensive experience in permitting of business/industrial projects in Hadley. Our professional staff will manage and coordinate your project's permitting to assure your company of a successful and expedited effort.

Parcel Size & Frontage:	14.3 acres with 630' of frontage on Venture Way
Developable Area:	7.0 acres
Suitable for Buildings :	Up to 50,000 SF on two stories
Services:	All Utilities Available
Zoning:	Industrial, seeking office uses
Permitting Status:	Site plan approval by Planning Board required.



Westmass

Westmass Area Development Corporation

255 Padgette Street, Chicopee, MA 01022

(413) 593-6421

www.westmassdevelopment.com

Information and pricing are subject to change without notice

Affiliated with the Economic Development Council of Western Massachusetts